

CARVER CLAMPS



RACK CLAMPS

Designed to cope with the toughest of engineering requirements the Carver Rack Clamp is widely used in fabrication, welding and maintenance. In fact, it is a vital addition to any toolroom or maintenance department.

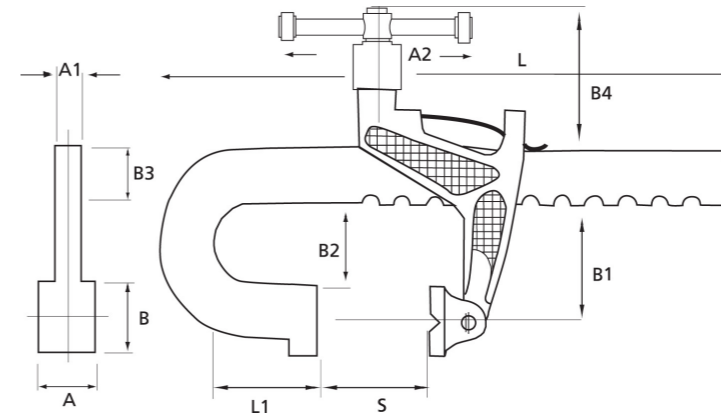
With a length capacity of 0-1350mm (54") the Rack Clamp is available in standard, medium and heavy-duty specification. Throat depth variations are also available across the standard and medium duty formats.

Its features include a unique anti-spatter shield to prevent the clamp-adjusting screw from weld spatter damage. The clamp's spring-loaded jaw stays in position when pressure is removed, yet the design still allows the jaw to move to securely clamp angled surfaces. Aside to this any tightening actions will not rotate the workpiece giving you complete control.










RACK CLAMPS



1 daN=1kgf / 1 daN=2.2lbf / 1 daN=10 N

FOR TOUGH JOBS IN ENGINEERING INCLUDING:

- ❖ Fabrication
- ❖ Welding
- ❖ Machining
- ❖ Maintenance
- ❖ Toolroom

	Part No.	Model No.	Alternative Model No.	Capacity (S) mm (Inch)	Reach (B1) mm (Inch)	Overall Length mm (Inch)	Weight kg
Standard Duty 1130 daN 	C301003	T186-6	T186-150	150 (6)	60 (2.3/8)	245 (9.5/8)	1.4
	C301005	T186-12	T186-300	300 (12)	60 (2.3/8)	395 (15.1/2)	1.8
	C301009	T186-20	T186-500	500 (20)	60 (2.3/8)	640 (25.1/8)	2.5
	C301012	T186-30	T186-750	750 (30)	60 (2.3/8)	890 (35.1/8)	3.2
Standard Duty Long Reach 565 daN 	C301101	T321-10	T321-250	250 (10)	120 (4.3/4)	360 (14.1/8)	2.0
	C301313	T321-24	T321-600	600 (24)	120 (4.3/4)	715 (28.1/8)	3.5
Medium Duty 1800 daN 	C301046	T290-9	T290-225	225 (9)	90 (3.1/2)	420 (16.1/2)	5.5
	C301049	T290-18	T290-450	450 (18)	90 (3.1/2)	655 (25.3/4)	7.0
	C301052	T290-30	T290-750	750 (30)	90 (3.1/2)	959 (37.3/4)	8.5
	C301055	T290-40	T290-1000	1000 (40)	90 (3.1/2)	1216 (47.7/8)	10.5
Medium Duty Long Reach 900 daN 	C301035	T285-9	T285-225	225 (9)	200 (8)	420 (16.1/2)	7.1
	C301037	T285-18	T285-450	450 (18)	200 (8)	655 (25.3/4)	8.5
	C301039	T285-30	T285-750	750 (30)	200 (8)	959 (37.3/4)	10.0
	C301041	T285-40	T285-1000	1000 (40)	200 (8)	1216 (47.7/8)	11.5
Heavy Duty 2700 daN 	C301172	T257-6	T257-150	150 (6)	115 (4.1/2)	403 (15.7/8)	9.8
	C301173	T257-12	T257-300	300 (12)	115 (4.1/2)	555 (21.7/8)	10.9
	C301174	T257-18	T257-450	450 (18)	115 (4.1/2)	710 (27.3/4)	12.2
	C301175	T257-24	T257-600	600 (24)	115 (4.1/2)	850 (33.1/2)	13.1
	C301176	T257-36	T257-900	900 (36)	115 (4.1/2)	1165 (45.3/4)	15.8
	C301177	T257-54	T257-1350	1350 (54)	115 (4.1/2)	1615 (63.1/2)	19.1

Model No.	A mm	A1 mm	A2 mm	B mm	B2 mm	B3 mm	B4 mm	L mm	L1 mm
T186-6	25	13	76	32	43	33	76	245	20
T186-12	25	13	76	32	43	33	76	395	20
T186-20	25	13	76	32	43	30	76	680	80
T186-30	25	13	76	32	43	30	76	930	80
T321-10	25	13	76	35	102	33.5	76	360	25
T321-24	25	13	76	32	98	30	76	715	8
T290-9	40	20	140	60	65	40	105	420	75
T290-18	40	20	140	60	65	40	105	640	75
T290-30	40	20	140	60	65	40	105	930	75
T290-40	40	20	140	60	65	40	105	1200	75
T285-9	40	20	140	60	180	40	105	430	75
T285-18	40	20	140	60	180	40	105	655	75
T285-30	40	20	140	60	180	40	105	955	75
T285-40	40	20	140	60	180	40	105	1205	75
T257-6	51	22	187	60	85	51	127	403	100
T257-12	51	22	187	60	85	51	127	555	100
T257-18	51	22	187	60	85	51	127	710	100
T257-24	51	22	187	60	85	51	127	850	100
T257-36	51	22	187	60	85	51	127	1165	100
T257-54	51	22	187	60	85	51	127	1635	100

RACK CLAMPS